

## You will need

- ✓ Dylon Fabric Painting Pens
- ✓ Dylon Fabric Paints
- ✓ Dylon Shade Creator
- ✓ Paintbrushes
- ✓ Palettes
- ✓ Washed white fabric
- ✓ Masking tape

## TEACHERS NOTES

All Dylon Fabric Paints are intermixable; when mixing metallic paints with other colours, use approximately 9 parts metallic to 1 part other colour in order to retain the metallic sheen. Dylon Fabric Paints can be diluted to achieve a water-colour effect as a background for further work. The diluted colour blends in better if the fabric is first dampened a little. Allow the colourwash to dry thoroughly before continuing to paint over it.

## HINTS

### COLOUR MIXING WITH PAINTS

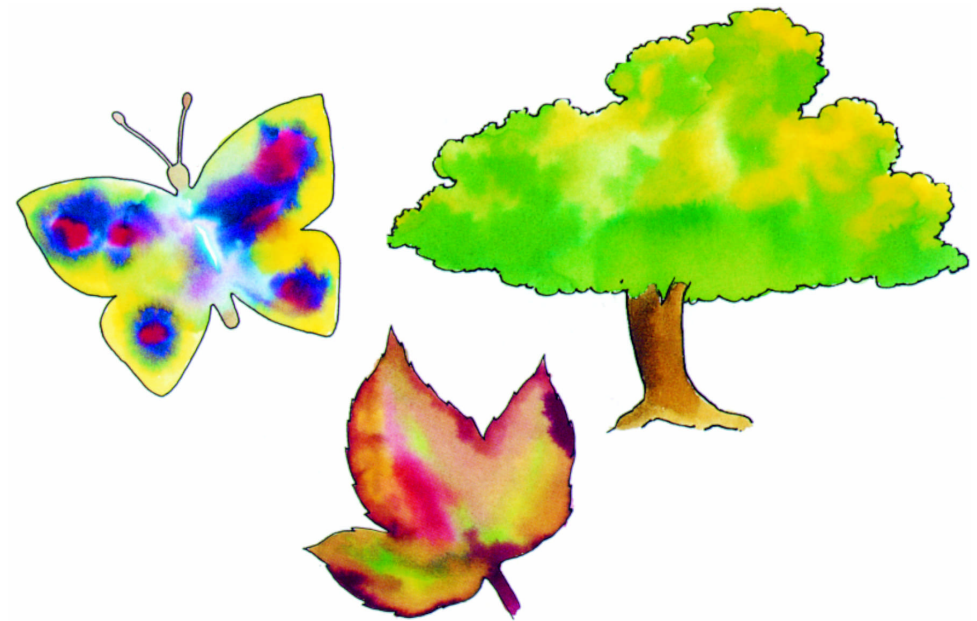
When colour mixing, add drops of a second colour to a base colour until the required colour is achieved.

### OBTAINING LIGHTER SHADES

Dylon Fabric Painting Shade Creator is a colourless medium that can be mixed with Dylon Fabric Paints to create an infinite number of lighter shades. Adding Shade Creator will not dilute the fabric paint or reduce its covering power. It is therefore suitable for all applications and techniques - brushing, sponging or stenciling.

### Artists to look at:

- ◆ Van Gogh
- ◆ Monet
- ◆ Renoir
- ◆ Turner



*Print out this factsheet, photocopy and enlarge it to the required size.*

### SKILL LEVEL

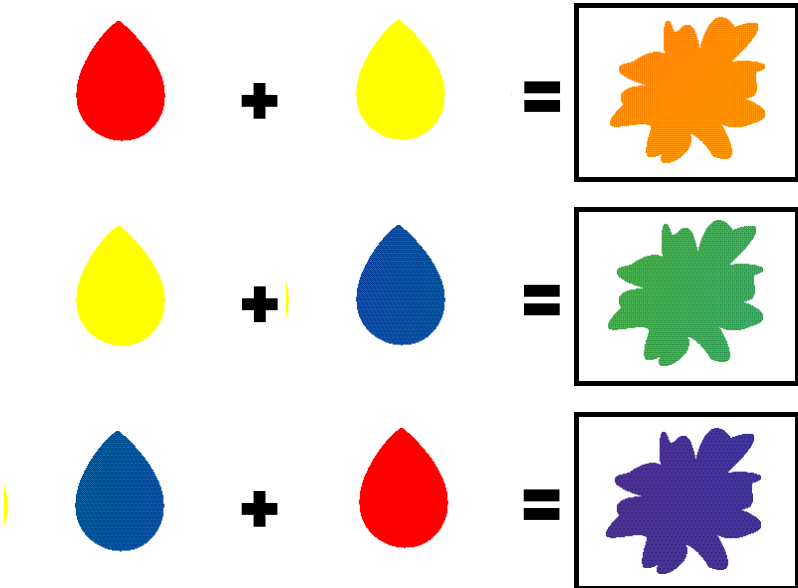
- Key stages 1 & 2



# Colour Mixing

# FABRIC PAINTING

RED, YELLOW, and BLUE are PRIMARY COLOURS



An equal mix of two PRIMARY colours makes a SECONDARY colour

a SHADE is a colour darkened by adding BLACK



a TINT is a colour lightened by adding WHITE

Close your eyes and imagine a tree with lots of leaves...

What colour are leaves?

How many other colours are there in the leaves besides green?

Using a Dylon Fabric Painting Pen, trace the outline of a leafy tree onto a piece of fabric, using the design over the page...

Put a little green fabric paint onto your palette, and paint in two or three leaves. Now mix a very small amount of white fabric paint into the green, and paint in two or three more leaves.

Add YELLOW... Add BLUE... Add RED... etc.

See how many different shades and tints of GREEN you can make!

### PROJECT:-

Using the Butterfly outline - try mixing metallic fabric paints with others, including fluorescent... blend the colours into each other so there are no hard lines of colour division.

