

3-Dimensional Painting

DYLON®

Using Dylon 3D Paints

Dylon 3D Paints are ideal for adding colour, texture and design to most natural or synthetic fabrics, as well as glass and card. Articles decorated with 3D Paints may be machine washed on a low temperature (30°C or less) gentle cycle. Iron on the reverse after washing - too high a temperature will melt the paint - never iron the surface of the paint!

Examples of 3D Glitter



3D Glossy



3D Pearl



3D Puff



Method

As with any textile dyeing or painting technique, the fabric must be pre-washed. This is particularly important with new fabrics to remove any dressing or finish which may prevent the paint from adhering.

Tape the fabric or garment onto a plastic covered board or work surface to ensure it stays flat while you are working on it. Try to work systematically from top to bottom of the design, so that you don't smudge wet areas of paint. If the nozzle becomes blocked, simply unblock with a pin or needle to allow paint to flow freely again.

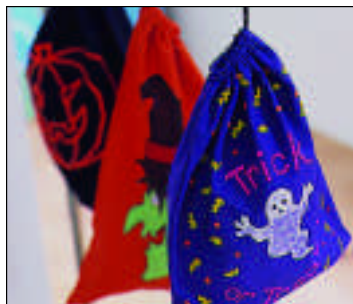
All Dylon 3D Paints are applied in the same way, squeezing the paint directly on to the surface of the fabric and allowing it to dry naturally. Puff Paints are the exception: when they are dry, they should be ironed with a hot iron on the reverse of the fabric to puff up the paint. Puff Paints give a denser and more textured surface than the other paints.

If applying Puff Paint to an article which cannot be ironed ie. Baseball boots or caps, the paint can be heated with a hairdryer on a hot setting - this takes longer than ironing, but has the advantage that you can watch the paint expanding!

Glow in the Dark 3D Paint is ideal for Halloween costumes and decorations!

Allow all Dylon 3D Paints to dry on the fabric for at least 72 hours before washing.

Filling in large areas with 3D Paint is not recommended, as it will take longer to dry and Puff Paint will pull and pucker the fabric when 'fluffed up'.



What you will need



Dylon 3D Paints in Glitter / Glossy / Pearl / Puff

Item to be decorated; Fabric (pre-washed and dried) / card / plastic / glass

Fabric Painting Pens or dressmakers chalk

Masking tape

Large pin or needle

Plastic covered board or flat work surface

Iron/hairdryer (if using 3D Paint in Puff)

Scissors

Expand students creative ideas



3D Paints are useful for outlining designs, lettering and texturing effects. The raised surface and strong colours can be adapted for many different styles of work. A smooth fabric is easiest to work on. Experiment by applying 3D Paint onto a range of different textiles. Even sheer and slightly open weave fabrics can be decorated in this way, although you need to tape them to a plastic-covered surface and ensure the paint is thoroughly dry before you attempt to remove the fabric.

Collect some illustrations of fashion garments from the past and, using these as the basis for your design, experiment with dots and dashes and small squiggles of 3D Paint in Glitter, Gloss or Pearl to cover a small piece of fabric with a textured pattern.

Beads stitched onto clothing have often been used for decorative effects, particularly during the 1900's and 1920's. Today Zandra Rhodes uses beaded decoration for many of her dress designs. Her style can be quickly and easily imitated by using small dots of 3D Paint placed close together to form patterns.



Teachers' Notes and Classroom Assignments

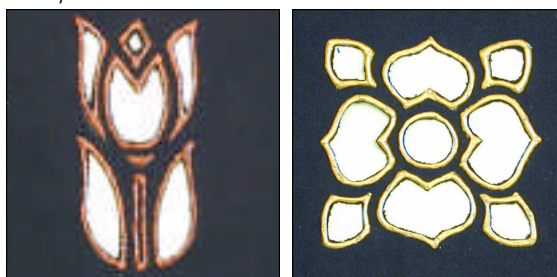
Inspiration

Appliqué is a method of decorating textiles by stitching or fixing cut-out shapes of another colour or type of fabric onto a base fabric. It is an excellent way of re-cycling clothing or scraps of fabric to make a decorative effect.

Dylon 3D Paints can be used to make this process quicker, simpler and even more effective. Cut out some shapes from scrap fabrics, ribbons and lace. Arrange the shapes on the foundation fabric to form a pattern. Secure with taping or Bondaweb® for larger pieces. Small pieces can easily be secured with 3D Paint alone.

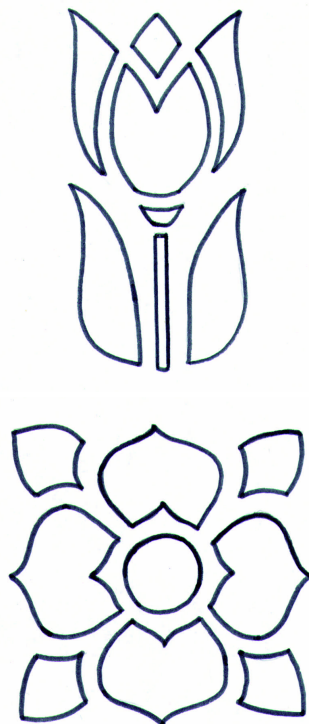
Carefully squeeze paint around the outside edge of the cut fabric, ensuring that the paint covers both the fabric on the top and the layer underneath. If you find this difficult to do in a continuous line, experiment with placing dots of paint very close together along the cut edges. This will give a thicker line with a slightly textured look, like a rope edging.

Make up a sample board showing a variety of techniques of applying decorative patterns with 3D Paints on different fabrics - experiment with satins, felts and velvets in addition to other natural and synthetic fabrics.



Try Persian appliqué - a technique originating in 19th Century Persia (present-day Iran), which imitates detailed embroidery by attaching cut out printed motifs to a plain background. You may also like to try Cut Work: apply the paint to enclose areas of pattern: when the paint is thoroughly dry, use embroidery scissors to remove the fabric from the inside of the enclosed areas of the pattern. This technique is best used on thin to medium weight fabrics; thick fabrics will tend to fray badly from underneath the design.

(Note: the Persian appliqué and Cut Work techniques are suitable for Glitter, Glossy and Pearl 3D Paints in the main, rather than Puff Paints.)

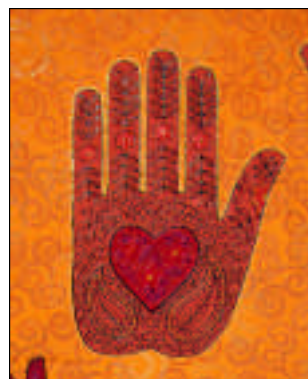


It is often useful to look at the work of artists past and present for design inspiration. You may find the later work of Henri Matisse (from 1941 onwards) useful for ideas for appliqué projects. Due to ill health, he found it difficult to paint, and began instead to work with paper cut outs. His cut outs of plant shapes and use of colour is particularly interesting, and is a style easily adapted to appliqué textiles.



Assignment 1

KEY STAGE 3 (1a, 1c, 2a, 2b, 2c, 4a, 4c, 5c)



A local hospital is developing a play area for the children's ward. Design a pocketed wall-hanging to hold small toys and books. Use 3D Paints to decorate the pockets to illustrate which items fit into the pockets. Include in the design the method of hanging, and decide whether the pockets should be flat or gusseted to hold slightly larger items. Could you make the pockets in a variety of sizes and shapes? Is it necessary to put in any form of stiffening to prevent the wall-hanging from sagging during use? Draw out the design with two options for colours and patterns. You could use a computer to enable you to present the design professionally. Make up one of the designs. Make up a label with care instructions and stitch it to the back of the wall-hanging.

Assignment 2

KEY STAGE 3 (1a, 1c, 2a, 2c, 4a, 5c)

A dance group has decided to put on a performance but is short of funds for costumes. They would like a number of costumes with bright decoration that would show up well under stage lights. They already have several plain coloured T-shirts and waistcoats used in a previous performance and they would like to re-cycle these, together with their matching coloured satin dance shoes. Make a series of sketches showing a variety of ways to decorate these items with 3D Paints, and make up one T-shirt with your chosen design.

